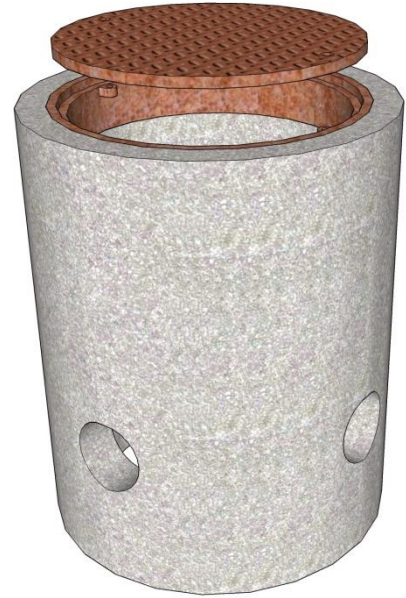
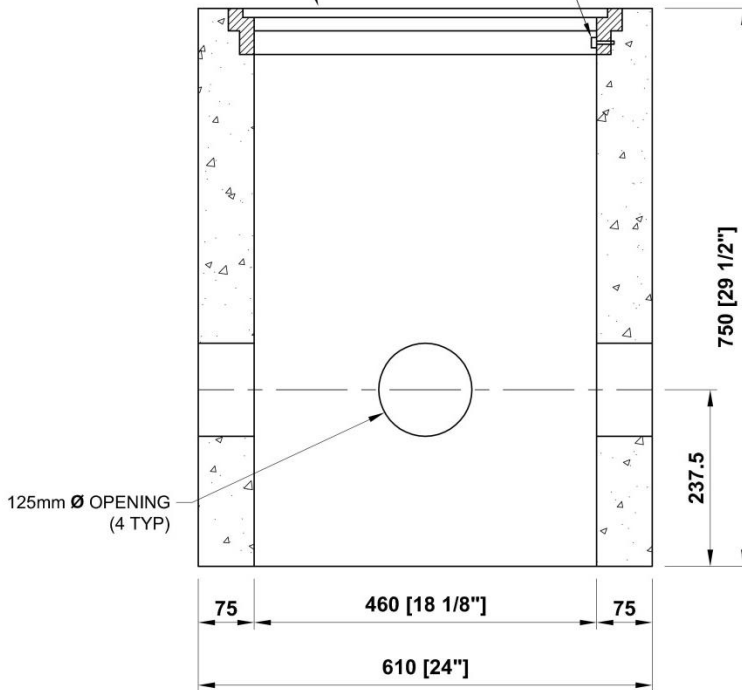


PLAN VIEW



CAST IRON FRAME & COVER
OPSD 2422.02

10mm Ø INSERT
c/w M10x38 BOLT



SECTION A-A

NOTES:

- (4) 125mmØ Duct Entry Openings
- Concrete: 30 MPa [min.] Air Entrained [5 - 8%]
- Wall Thickness: 75mm
- Reinforcement: 10M Rebar & 4x4x4/4 WWF
- Cast-in Frame with removable cover

VAULT Weight = 227 kg [500 lbs]

SATISFIES OPSD 2112.02