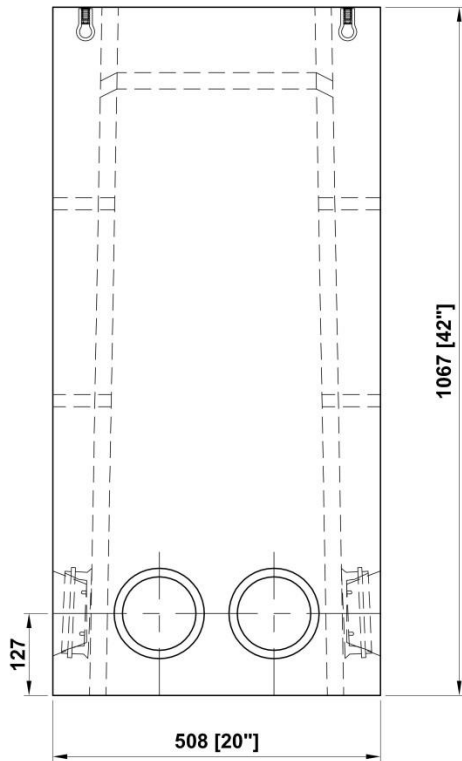
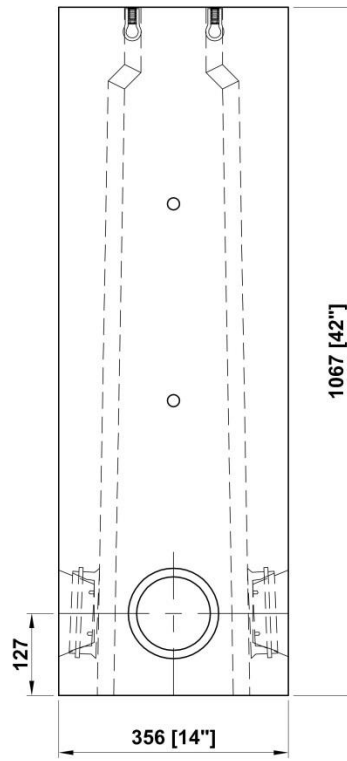


PLAN VIEW



SIDE VIEW



END VIEW

- NOTES:**
- (6) 140mm PVC Seal Duct Entry Knockouts
 - Concrete: 30 MPa [min.] Air Entrained [5 - 8%]
 - Wall Thickness: 57mm
 - Reinforcement: 10M & 4x4x4/4 WWF
- VAULT Weight = 248 kg [546 lbs.]