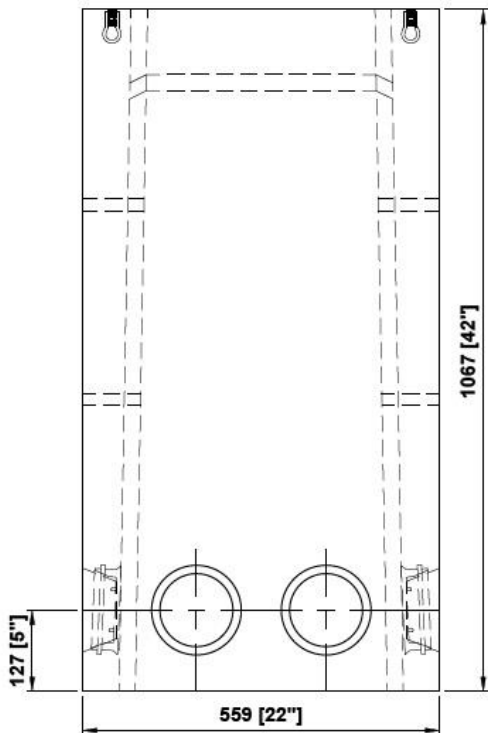
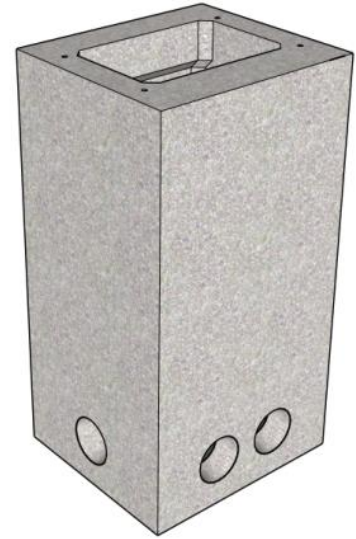
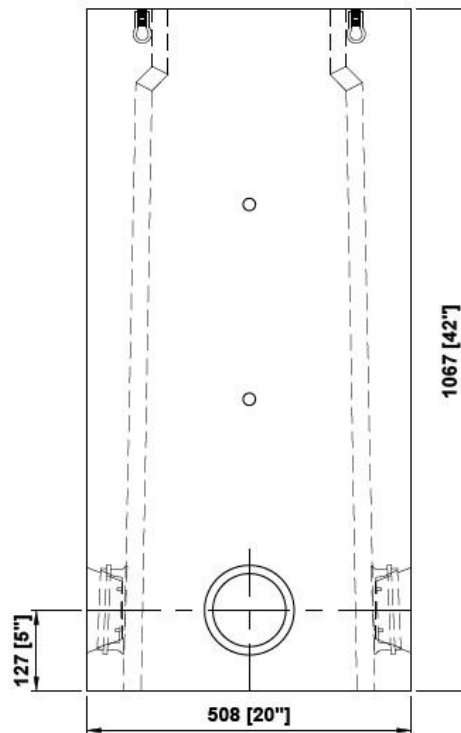


PLAN VIEW



SIDE VIEW



SIDE VIEW

NOTES:

- (6) 140mm PVC Seal Duct Entry Knockouts
- Concrete: 30 MPa [min.] Air Entrained [5 - 8%]
- Wall Thickness: 57mm
- Reinforcement: 10M & 4x4x4/4 WWF

VAULT Weight = 318 kg [700 lbs.]