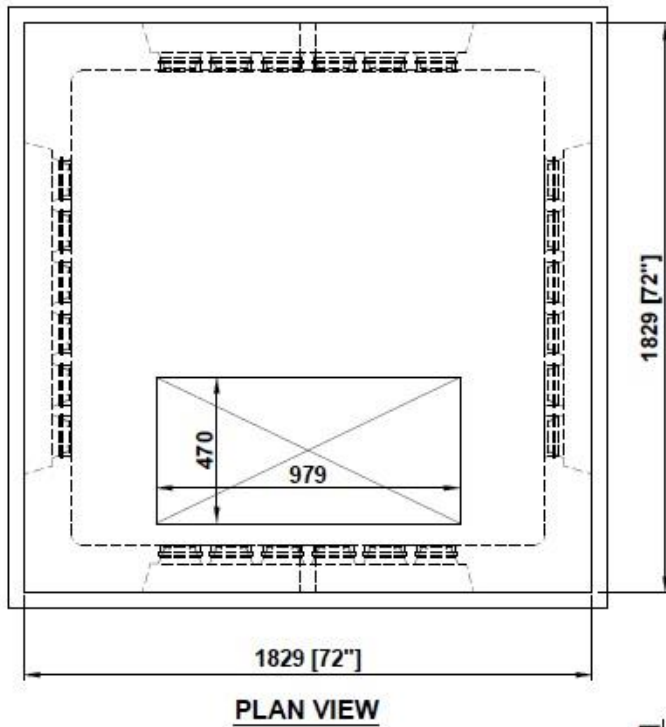
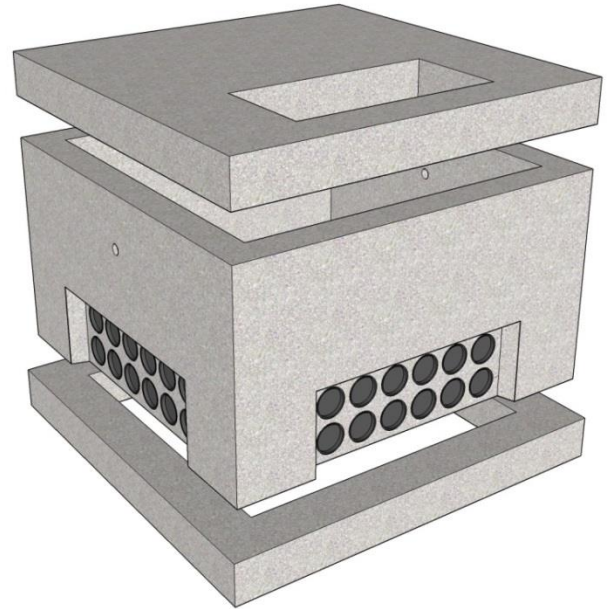
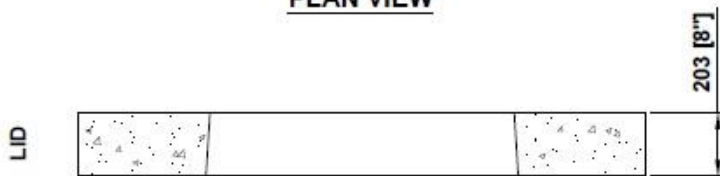




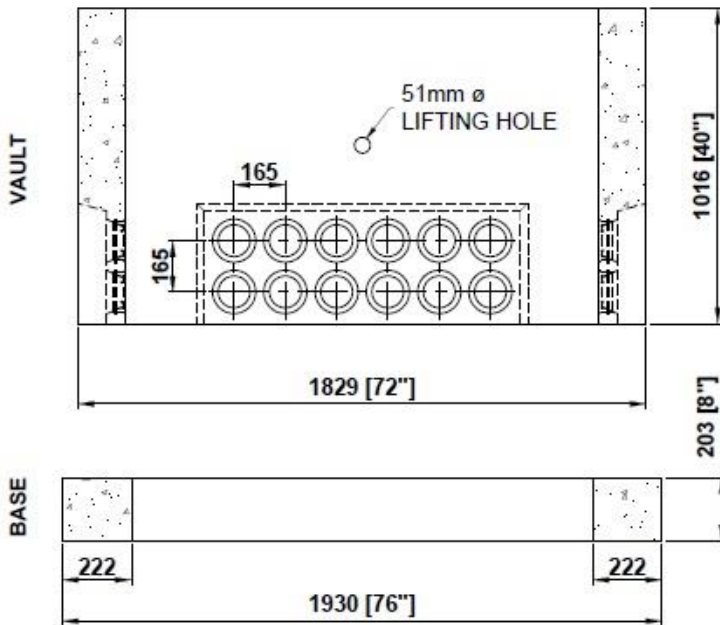
**FOR UP TO 1200 KVA
TRANSFORMER**



PLAN VIEW



LID



SIDE VIEW

NOTES:

- (4) - Recessed Duct Banks w/ LD-1 PVC Seal Duct Entry Knockouts
- Concrete: 30 MPa [min.] Air Entrained [5 - 8%]
- Reinforcement: 10M Rebar & 4x4x4/4 WWF
- 51mmØ Lifting Holes
- Base Thickness: 203mm [8"]
- Lid Thickness: 203mm [8"]
- Wall Thickness: 152mm [6"]

LID Weight: 1 400 kg [3 085 lbs]
 VAULT Weight: 1 996 kg [4 400 lbs.]
 BASE Weight: 742 kg [1 635 lbs.]

OPTIONAL SOLID BASE AVAILABLE
 Weight: 1 814 kg [4 000 lbs.]