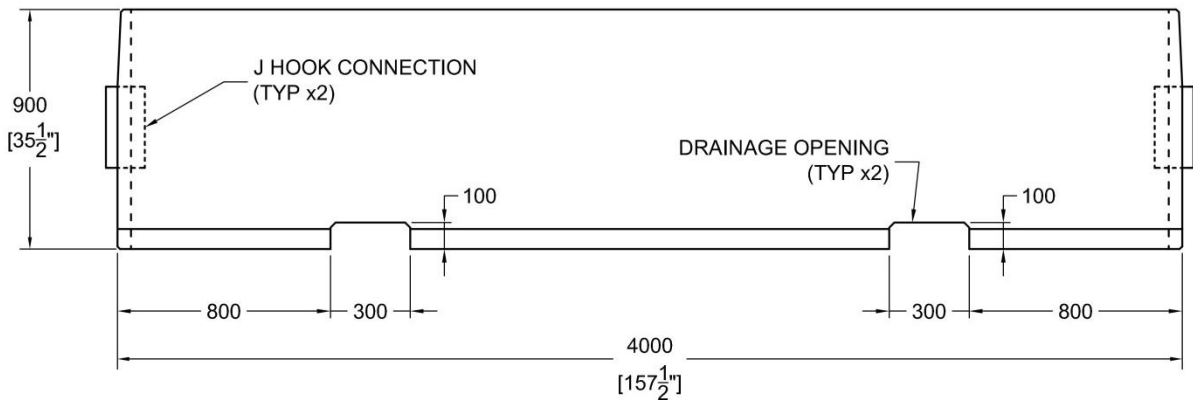
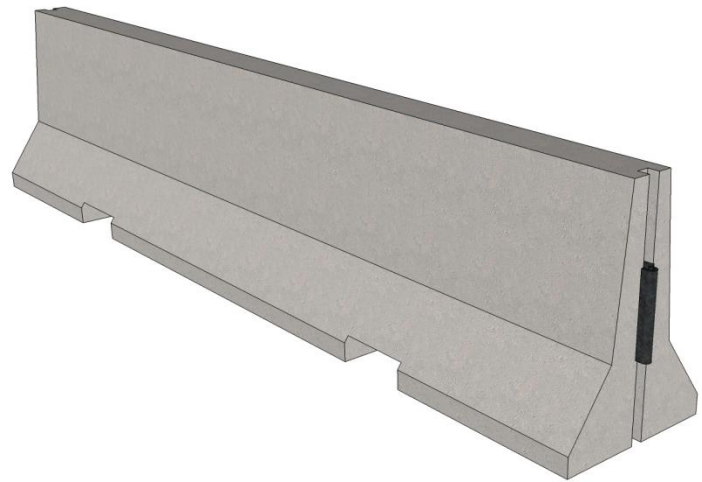
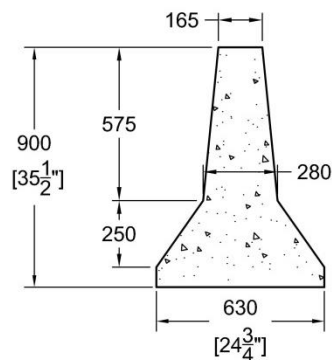




HY-GRADE
PRECAST CONCRETE LTD

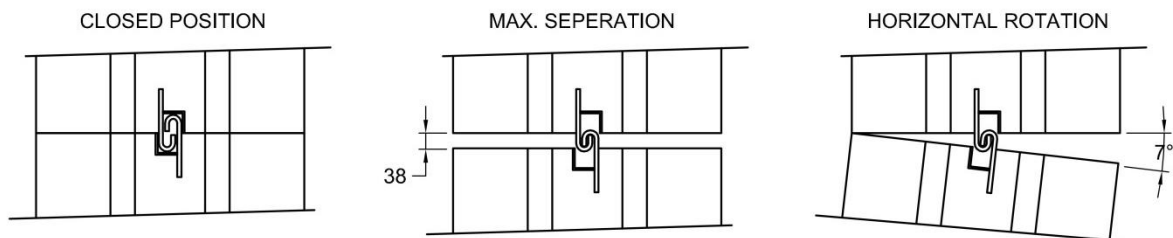
Precast Safety Barrier Product Line

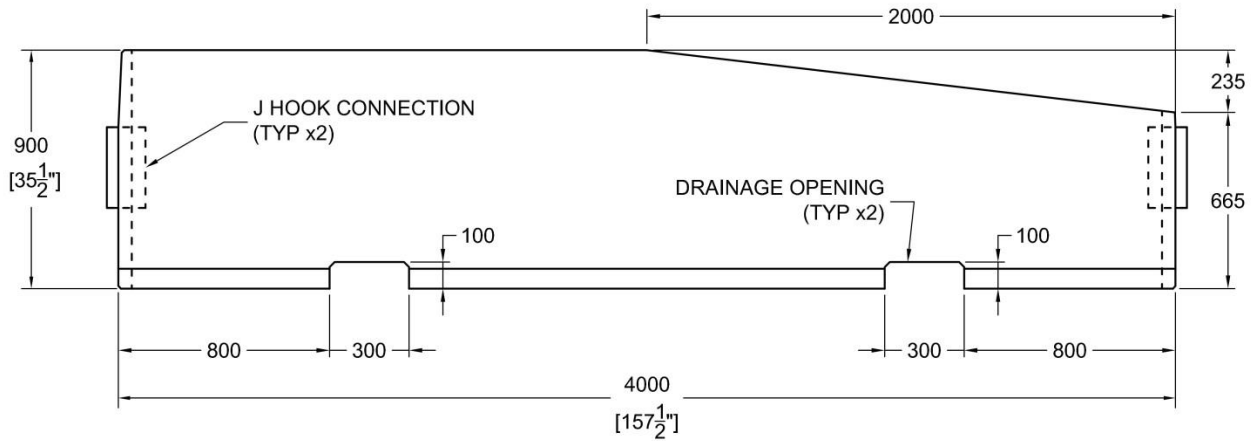
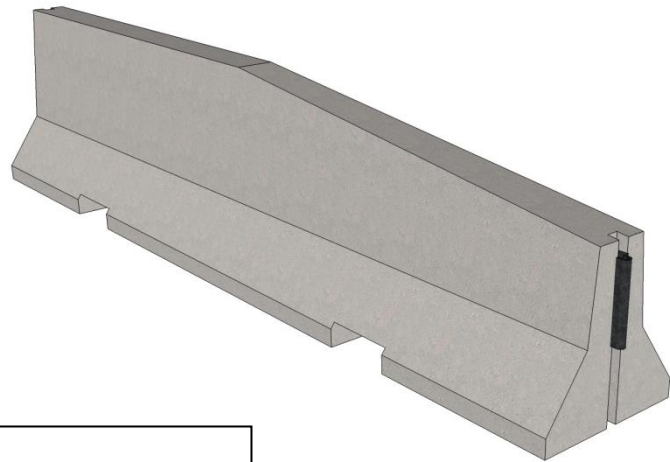
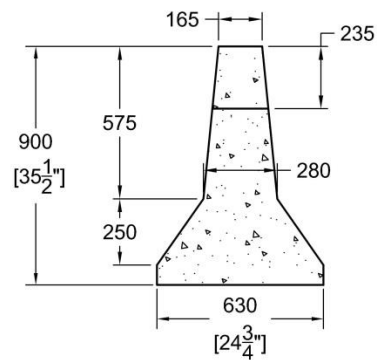


ELEVATION VIEW**SECTION VIEW****NOTES:**

- Lowest Installation Cost of any system
- System configuration meets MCHRP Report 350 TL-3
- JJ Hook Connection is Proprietary to *Easi-Set Industries Inc.*
- Satisfies OPSS 1352, 1989 (special provision No. 740S03, 2011)
- Satisfies OPSD 911.150

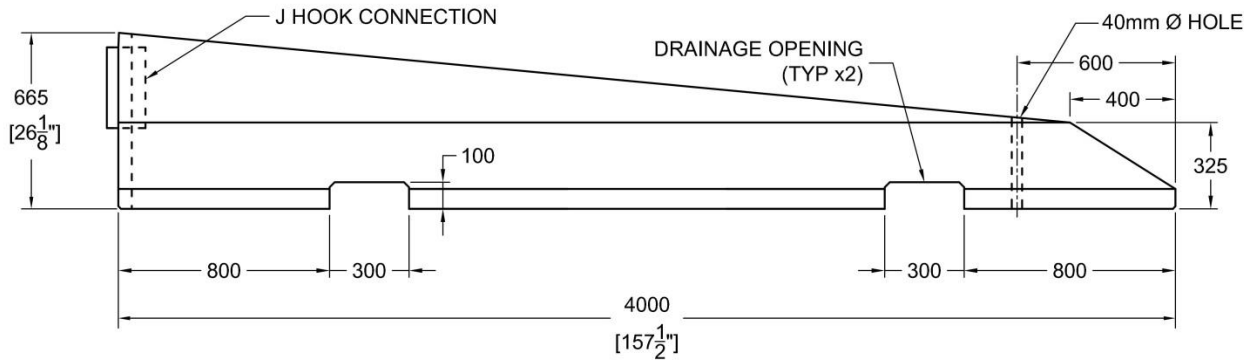
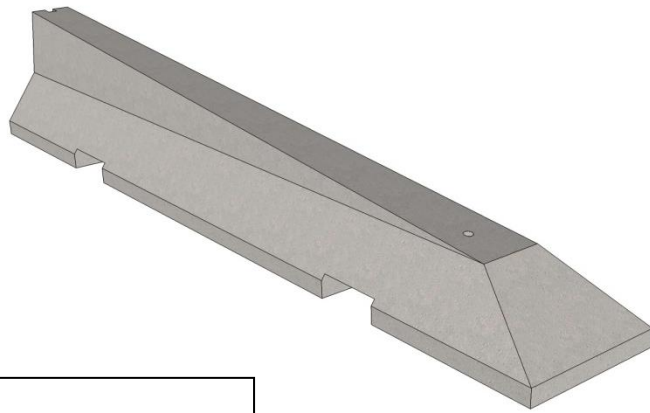
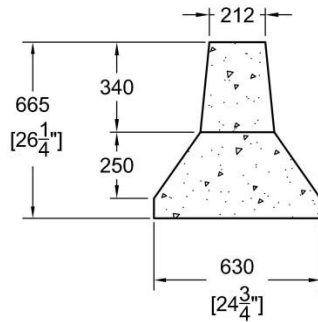
Unit Weight: 2673 kg [5893 lbs.]

BARRIER-TO-BARRIER CONNECTION

**ELEVATION VIEW****SECTION VIEW****NOTES:**

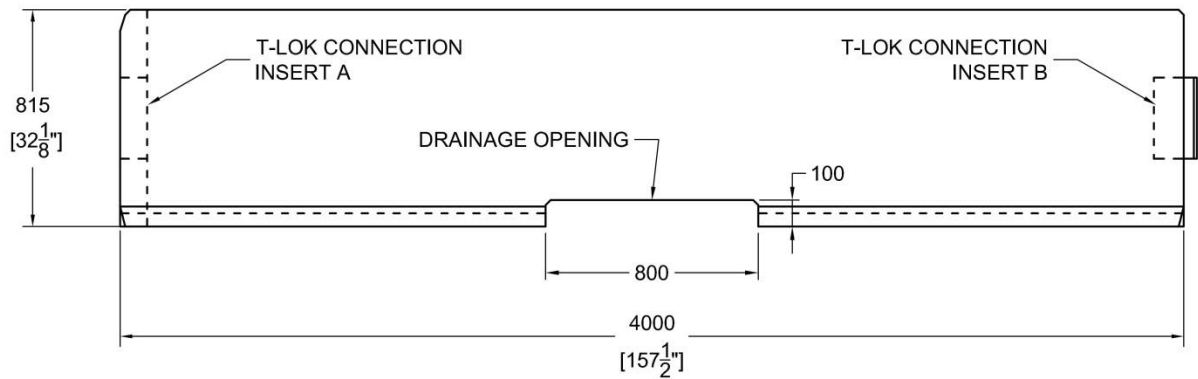
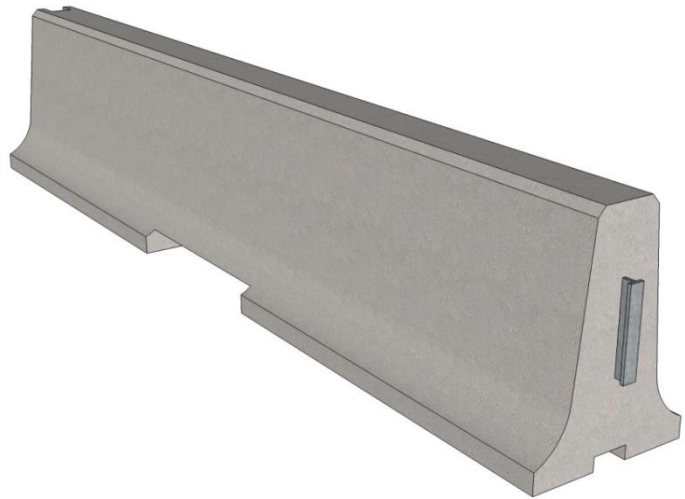
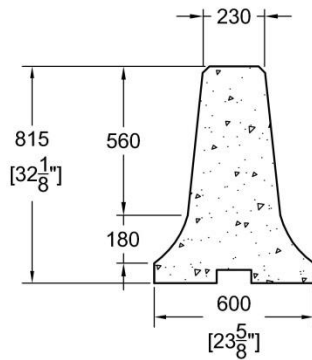
- Part 1 of 2 required for Median End conditions
- System configuration meets MCHRP Report 350 TL-3
- JJ Hook Connection is Proprietary to *Easi-Set Industries Inc.*
- Satisfies OPSS 1352, 1989 (special provision No. 740S03, 2011)
- Satisfies OPSP 911.150 & 911.230

Unit Weight: 2425 kg [5350 lbs.]

ELEVATION VIEW**SECTION VIEW****NOTES:**

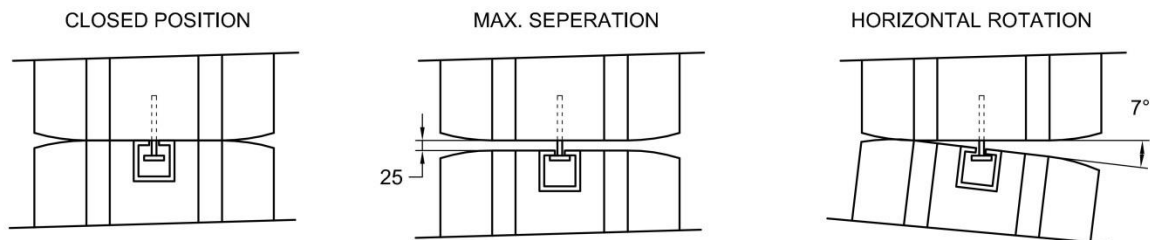
- Part 2 of 2 required for Median End conditions
- System configuration meets MCHRP Report 350 TL-3
- JJ Hook Connection is Proprietary to *Easi-Set Industries Inc.*
- Satisfies OPSS 1352, 1989 (special provision No. 740S03, 2011)
- Satisfies OPSD 911.150 & 911.230

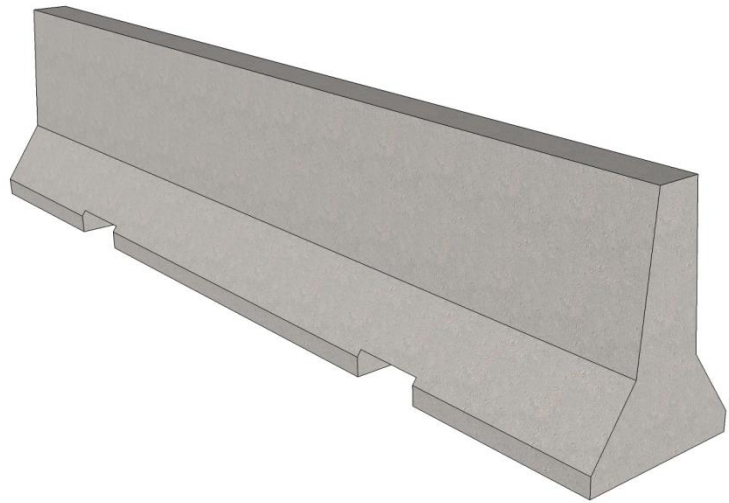
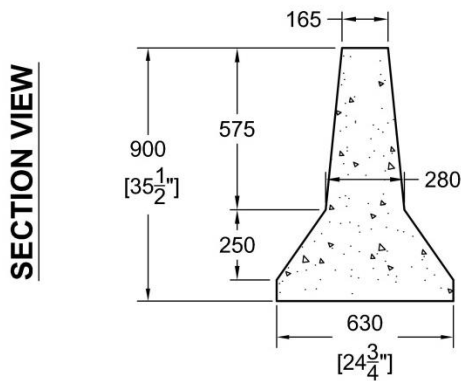
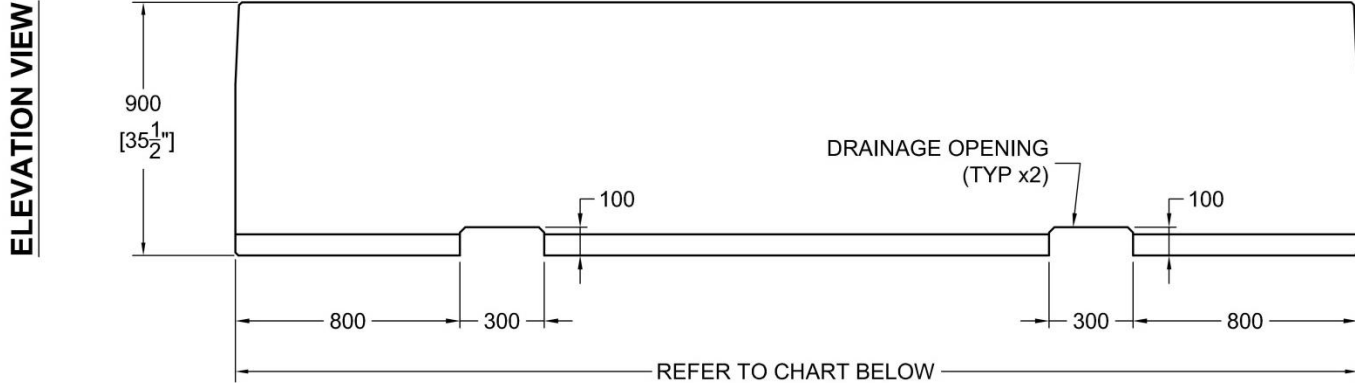
Unit Weight: 2050 kg [4520 lbs.]

**ELEVATION VIEW****SECTION VIEW****NOTES:**

- System configuration meets MCHRP Report 350 TL-3
- T-Lok Connection is Proprietary to *Rockingham Precast*
- Satisfies OPSS 1352, 1989 (special provision No. 740S03, 2011)
- Satisfies OPSD 911.180

Unit Weight: 2636 kg [5812 lbs.]

BARRIER-TO-BARRIER CONNECTION

**NOTES:**

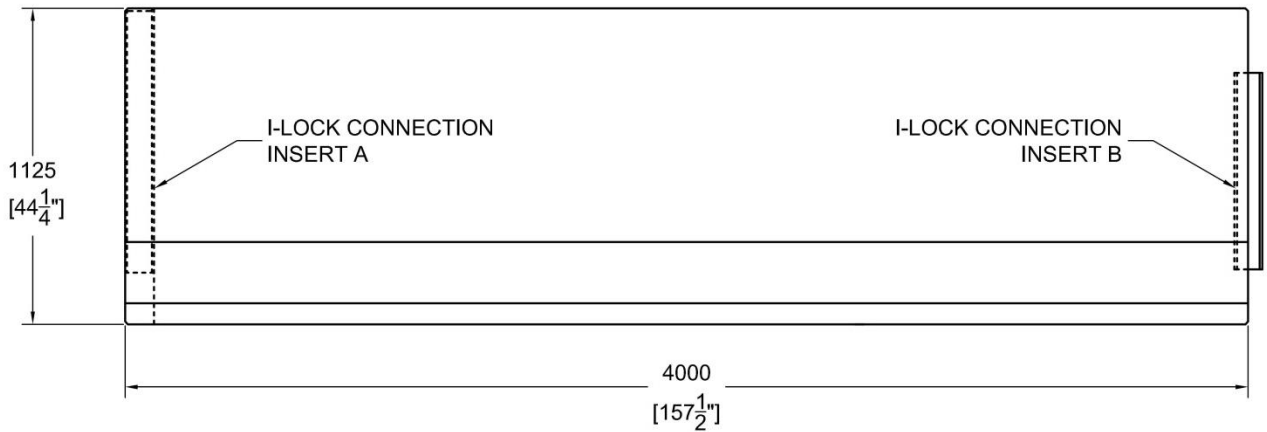
- Lowest cost to Produce of any system
- Ideal for parking lots and public areas
- Refer to chart below for variable stocks sizes available

Custom Lengths Available upon Request

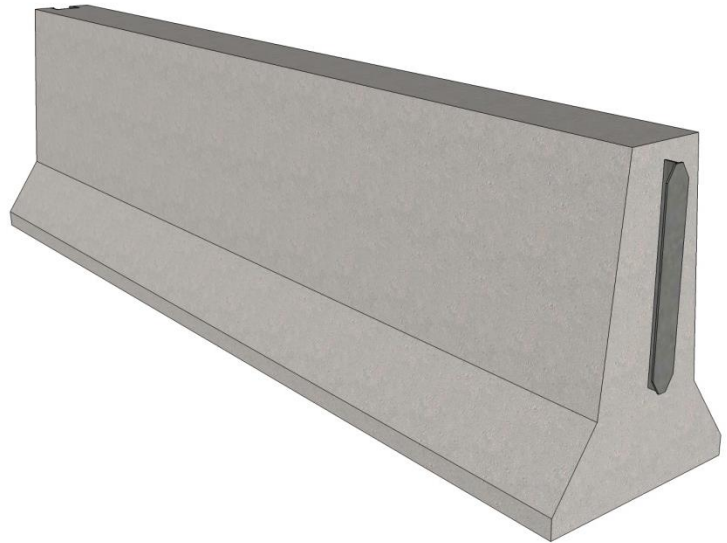
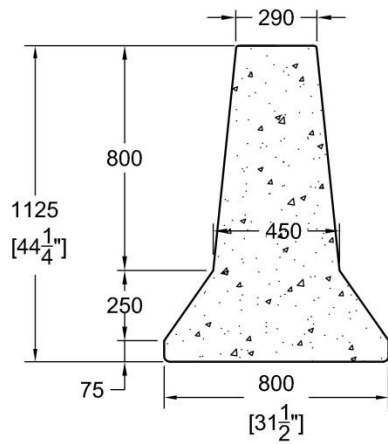
Available Sizes

Length	Weight
1m (3.28')	602 kg (1328 lbs)
2m (6.56')	1296 kg (2857 lbs)
3m (9.84')	1988 kg (4386 lbs)
3.925m (12.88')	2632 kg (5800 lbs)

ELEVATION VIEW



SECTION VIEW



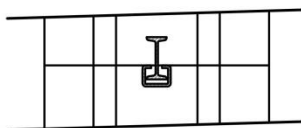
NOTES:

- Satisfies OPSS 1352, 1989 (special provision No. 740S03, 2011)
- Satisfies OPSS 911.143

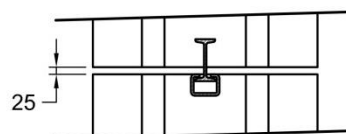
Unit Weight: 4900 kg [10802 lbs.]

BARRIER-TO-BARRIER CONNECTION

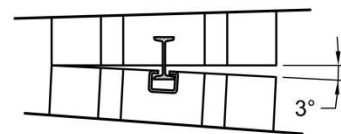
CLOSED POSITION

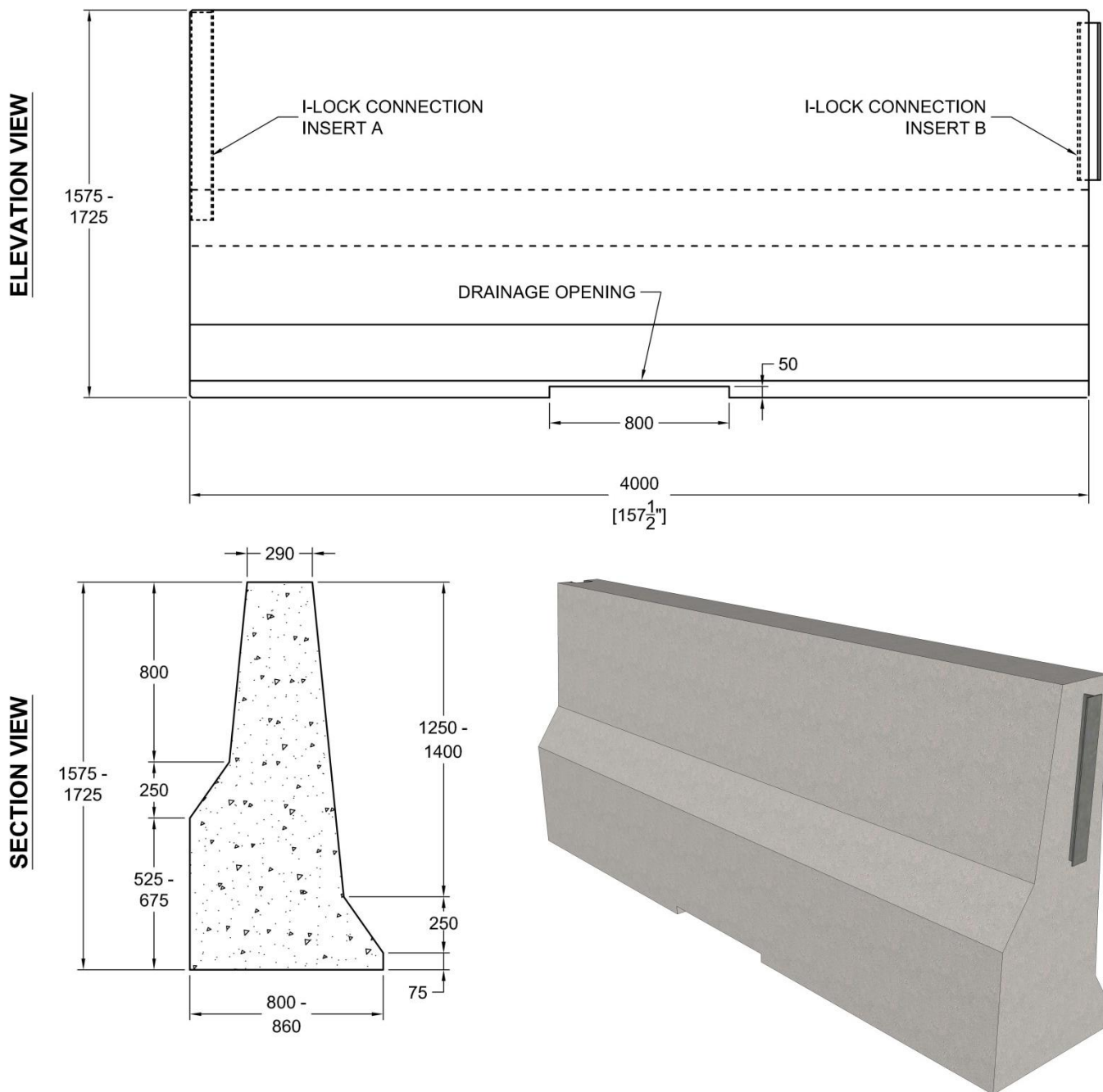


MAX. SEPERATION



HORIZONTAL ROTATION



**NOTES:**

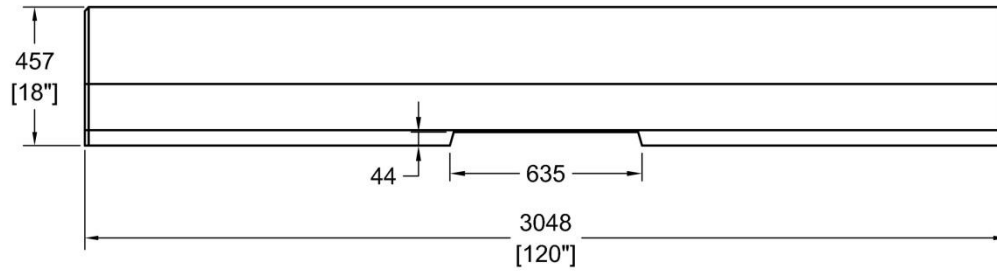
- Available in Variable Heights
- Ideal for changes in grade level
- Comparable to OPSD 911.130 Type A-1

Maximum Unit Weight = 8788 kg (19374 lbs)

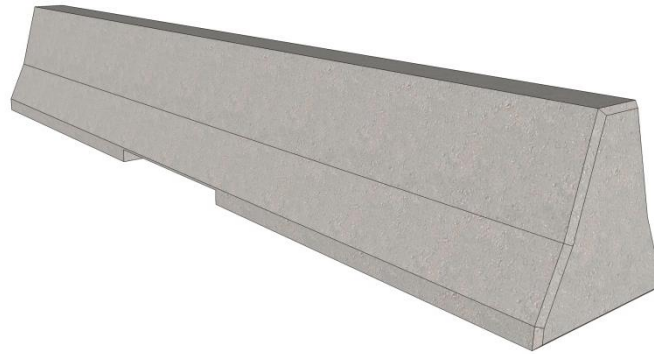
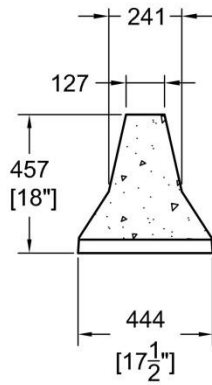
Minimum Unit Weight = 7368 kg (16243 lbs)



ELEVATION VIEW



SECTION VIEW



Unit Weight = 860 kg (1896 lbs)

**CONTACT US TODAY TO EXPERIENCE
THE HY-GRADE ADVANTAGE!**



**Hy-Grade Precast Concrete
2411 First Street Louth
St.Catharines, Ontario
L2R 6P7, Canada**

**Toll Free: 1 800 229 8568
Tel: 905 684 8568
Fax: 905 684 8560**

