



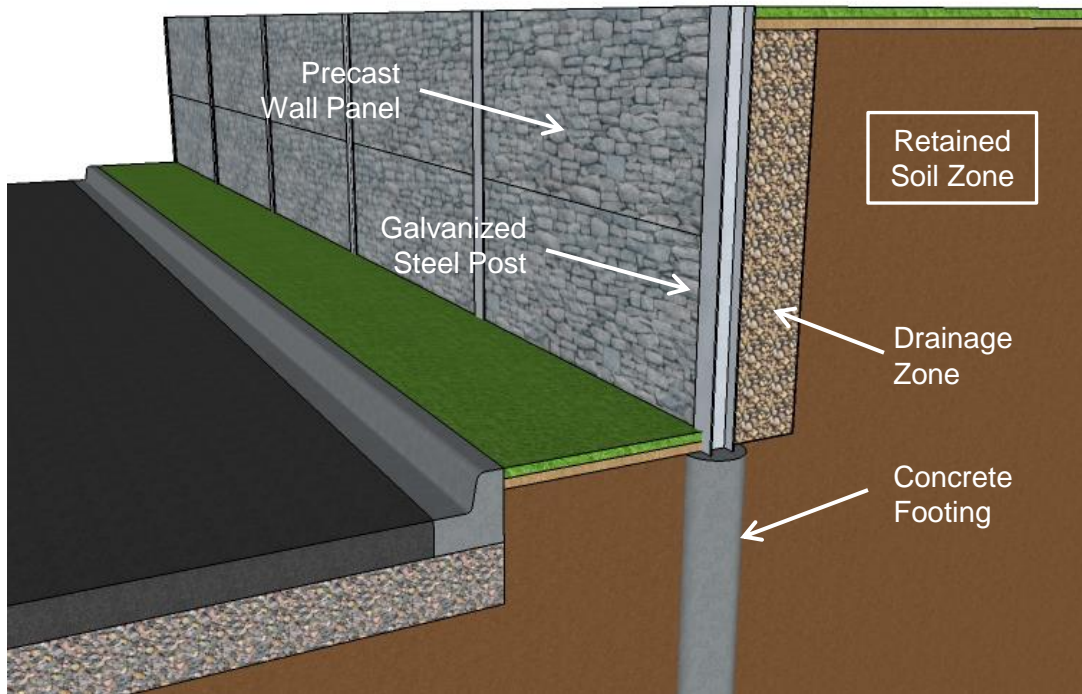
Post & Panel Retaining Wall System



Hy-Grade Precast Concrete
2411 First Street Louth, St.Catharines, ON
905.684.8568
www.hygradeprecast.com



Post & Panel Retaining Wall System



Hy-Grade Precast's Post & Panel Retaining Wall System is an aesthetically pleasing, structurally superior, low footprint, retaining wall solution.

Durability

Made of wet-cast, air-entrained concrete with a minimum compressive strength of 30 MPa. The durability required in environments prone to the challenges of freeze/thaw cycles, road salts or brackish water.

Efficient Installation

Walls can be constructed quickly using full size precast panels. A standard panel is the equivalent area to 10 traditional segmental wall blocks. Maximizing productivity and minimize manual labor. No mortar, no pins.

Engineered

Retaining walls are professionally engineered and designed for wall performance that is generally unavailable for natural stone walls.

Customized Design and Aesthetics

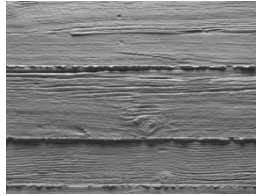
Walls panels are available in a variety of finish options. Refer to next page for options. Concrete stains are readily available and easily applied in the field after installation to achieve a natural look that will last for years.

Post & Panel Retaining Wall System

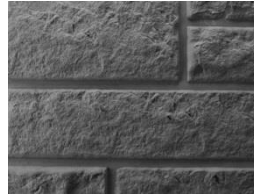
Standard Finish Options:



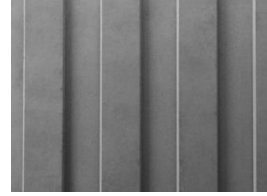
Smooth Concrete



Wooden Plank



Ashlar Stone



Corrugated Steel

Custom finishes available upon request.

'SoftSound' Sound Absorption Option

An additional feature available with the Hy-Grade Precast Post & Panel Retaining Wall System is the integration of a sound absorptive exterior layer. Hy-Grade Precast is a licensed manufacturer of the 'SoftSound' system which is a proprietary wood chip & cement blend and is on the MTO's Designated Sources Material list.

The integration of a 'SoftSound' layer turns your wall into a hybrid retaining wall / noise wall; far superior to traditional lagging panel systems.

